



Rochester Yacht Club

5555 St. Paul Blvd., Rochester, N.Y.

585-342-5511

www.Rochesteryc.com

RYC SAILING INSTRUCTIONS May 2 2005

1 RULES

- 1.1 These Sailing instructions shall apply to RYC sponsored events including club races and RYC recognized distance events.
- 1.2 These races will be governed by rules as defined in *The Racing Rules of Sailing*, and the prescriptions of US SAILING.
- 1.3 RYC races are designated as ISAF Advertising Category "C" except where class rules conflict.

2 ENTRIES AND ELIGIBILITY

- 2.1 Eligible boats may be entered by completing the RYC registration form. Forms should be returned to the Club Office or at the Skipper's meeting on May 5th, 2005. Boats not completing a form will not be scored
- 2.2 Club races shall be limited to RYC members and must have a member or spouse or child (under the age of 19) on board in order to compete. The registered skipper/owner shall have paid a boat registration fee, met that class's requirements and be a member of US SAILING.
- 2.3 Regular crewmembers of boats participating in club races are encouraged to be members of RYC, RYJC or immediate family of a RYC member.
- 2.4 "Genoa Only" Qualification - The boats must meet the requirements set forth above, and only Mainsails and Genoa or jibs shall be used (no spinnakers, staysails, cruising drifters, bloopers, etc.). The Genoa or jib must be in a furling headstay device, luff groove system, or hanked to the forestay. A spinnaker pole or whisker pole shall not be used. There shall be no devices other than sheets attached to the clew of the Genoa or jib. The Genoa or jib shall not be sheeted to the main boom.
- 2.5 Boats racing under the PHRF-LO handicapping system shall have a valid 2005 certificate.

3 NOTICES TO COMPETITORS

- 3.1 Offshore fleet and one design classes 19 feet and larger - notices to competitors will be posted on the official notice board, located on the south wall of the locker next to the former railway area.
- 3.2 For one design classes less than 19 feet the official notice board is located on the west wall of the Junior Sailing Center.

4 CHANGES TO SAILING INSTRUCTIONS

- 4.1 Changes in the Sailing Instructions will be posted by 0830 the day they will take effect except that any change in the Schedule of Races will be posted before 1800 on the day before it will take effect.

5 SIGNALS MADE ASHORE

- 5.1 Signals made ashore will be displayed on the flagpole in front of the RYC Clubhouse.
- 5.2 When Flag AP is displayed ashore, '1 minute' is replaced with 'not less than 45 minutes' in the race signal AP. This changes Race Signals.
- 5.3 When Flag Y is displayed ashore, rule 40.1 applies at all times while afloat. This changes the Part 4 preamble.

6 SCHEDULE OF RACES

- 6.1 The schedule of races is set forth on the sailing calendar posted on the RYC website.

7 CLASS FLAGS

- 7.1 Class flags - See **Attachment 1** for listing of Class flags.

8 RACING AREAS

- 8.1 The racing areas (identified as Areas "A", "B", "C" and "D") are shown on the chart. (Attachment #4)
- 8.2 Wednesday Night Series - Racing will take place in Area "A" for the offshore fleet and "B" for the one design fleet.

9 THE COURSES

- 9.1 Courses will consist of Marks described in section 10 as set by the Race Committee.
- 9.2 Diagrams and the course identifying letters (course designations) begin on are indicated in **Attachment 2**.
- 9.3 When there is a gate, boats shall sail between the gate marks from the direction of the previous mark and round either gate mark.
- 9.4 No later than the warning signal the race committee signal boat will display the letter placard identifying the course, approximate compass bearing and distance in nautical miles to the first mark.
- 9.5 Prior the start of the first division of an Offshore Fleet the RC may announce on VHF channel 09 the designated course, approximate compass bearing and distance in nautical miles to the first mark.
- 9.6 For the Collegiate and River Courses RRS 89.2(c) will apply, oral changes will be made by the race officer by hail.

10 MARKS

- 10.1 All Club Marks will be orange tetrahedrons or yellow cylinders and will be set for each day's races.

11 THE START

- 11.1 Races will be started in accordance with RRS 26. The Warning times given for the first class/division is described in **Attachment 3**.
- 11.2 Boats whose warning signal has not been made shall avoid the starting area.
- 11.3 The committee may attempt to notify premature starters by hailing sail numbers, hull numbers or both. Failure to hear a hail will not be Grounds for Redress under RRS 62.
- 11.4 The starting sequences for the classes/divisions following the first starting class / division will nominally follow the times (order) in **Attachment 3**. The warning signal for that starting sequence will be the appropriate class/division flag. However, that flag, *at the discretion of the race committee*, may not be hoisted with the starting signal of the previous class/division. In that event the race committee will announce that fact over VHF channel 09 (offshore) 72 (one design)
- 11.5 The Sound Signal Starting System (Appendix Q of the RRS) will be used for the Collegiate and River courses.
- 11.6 The Starting Line will be between a staff or halyard displaying an orange flag on the main committee boat and the course side of a mark designating the port end of the Starting Line.
- 11.7 The sequence will begin with the hoisting of the orange starting line flag on the Committee Boat signal boat accompanied by one sound signal. This will be followed one minute later by hoisting of the first warning signal and class/division flag with one sound. This modifies RRS 26.
- 11.8 No races will start after 8PM.
- 11.9 Any boat not starting within 10 minutes of her starting signal for a race will be scored DNS for that race. This changes RRS 35 and A4.1.

12 SAILING THE COURSE

- 12.1 No boat shall sail through a start/finish line when sailing a leg of a race course unless starting, finishing or rounding a mark of the course. A starting/finish line shall be indicated when the race committee boat is on station at one end of the line while flying an orange flag.

(a) *Collegiate and River courses only* When the start/finish line is in the middle of the leg, the starting mark and/or boat are considered part of the course only when starting or finishing. At other times the starting mark and/or boat are considered obstructions.

(b) The Race Committee signal boat may trail a "barging mark" astern or have a mark anchored off the quarter. This mark shall be considered part of the Committee Boat.

12.2 CHANGE OF THE NEXT LEG OF THE COURSE

(a) To change the next leg of the course, the race committee will lay a new mark (or move the finishing line) and remove the original mark as soon as practicable.. When in a subsequent change a new mark is replaced, it will be replaced with an original mark.

13. THE FINISH

13.1. The finishing line will be between a staff or halyard displaying an orange flag on a race committee boat and the course side of the specified finishing mark.

13.2 If the Race Committee does not plan to run another race, it will fly Code Flag "AP over A" at the finish.

13.3 If the race committee intends to start another race on the same day, it will display the Second Substitute (with no sound) while boats are finishing.

14. TIME LIMIT

14.1. The Time Limits for each of the races/series are noted following the starting sequences in **Attachment 3** This changes RRS 35. .

15. PROTESTS AND REQUESTS FOR REDRESS

15.1. RRS 61.1(a) is modified such that a boat intending to protest another boat shall notify the Race Committee Finish Boat immediately after finishing of her intent to protest and of the identity of the boat to be protested.

15.2. Protests shall be written on forms available at the RYC clubhouse bar or downloaded from the US Sailing website. Protests shall be filed within 60 minutes of the official arrival of the Committee Boat at the dock. A Notice will be posted on the official notice board stating the official arrival time of the Committee Boat.

15.3. Each protest form should be placed in the depository located at the RYC Clubhouse Bar. Each protest form shall contain the date and time it was placed in the depository and this information must be attested to by the signature of the bartender on duty.

15.4. Protests will be heard at the RYC Clubhouse, unless designated otherwise on the official race committee notice board. Protest hearings will be conducted following each race, unless designated otherwise on the official race committee notice board. Every effort will be made to schedule timely protest hearings and to provide reasonable schedule notification to all involved parties of the protest(s).

16. SCORING

16.1 The Low Point Scoring System, RRS Appendix A4.1 unless a fleet specifies otherwise in their specific scoring instructions. (See Scoring Section of these sailing instructions).

17. WITHDRAWAL

17.1. A boat which retires from a race shall make all reasonable efforts to so notify the Race Committee by hail, VHF radio, cell phone or in person onshore.

18. SAFETY

Regarding RRS Part I Fundamental Rules Special attention is called to RRS Fundamental Rules, particularly:

- **A boat or competitor shall give all possible help to any person or vessel in danger.**
- **Each competitor is individually responsible for wearing personal buoyancy adequate for the conditions.**
- **The responsibility for a boat's decision to participate in a race or to continue *racing* is hers alone.**

19. EQUIPMENT AND MEASUREMENT CHECKS

- 19.1. A boat or equipment may be inspected at any time for compliance with the class rules and sailing instructions.
- 19.2. Boats shall be equipped in compliance with ISAF Offshore Special Regulations – Category 4 Monohulls.
- 19.3. A boat shall carry all equipment required by her class rules or handicap rating system.
- 19.4. In addition all one design classes should have a bowline appropriate for towing. Inspection ports must be tightly closed at all times while boats are on the water.

20. RADIO COMMUNICATIONS

- 20.1. Race Committee will monitor VHF Channel 16.
- 20.2. Offshore Classes – Race Committee will communicate on VHF Channel 09.
- 20.3. One Design Classes on Wednesday nights (J22, J24 and Sonar) – Race Committee will communicate on VHF Channel 72.

21. PRIZES

- 21.1. Prizes will be given at Cups and Flags on November 12, 2005 at RYC.

22. DISCLAIMER OF LIABILITY

- 22.1. Competitors participate in races entirely at their own risk. See Rule 4, Decision to Race. The organizing authority will not accept any liability for material damage or personal injury or death sustained in conjunction with or prior to, during, or after racing.

ATTACHMENT 1

CLASSES

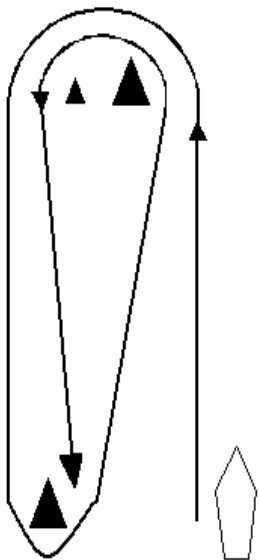
One design		
Class		Pennant
Byte		CF
Optimist		CF
420		CF
Laser		CF
Ideal 18		CF
J22		CFor 7
J24		CF or 8
Sonar		CF or 10

Offshore		
Division		Pennant
Genoa Only		GO
Div VI		6
Div V		5
Div IV		4
Div III		3
Div II		2
DIV I		1

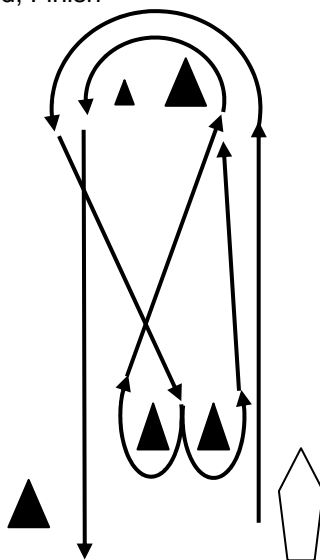
CF signifies class flag for that fleet

Attachment 2 - Course Diagrams

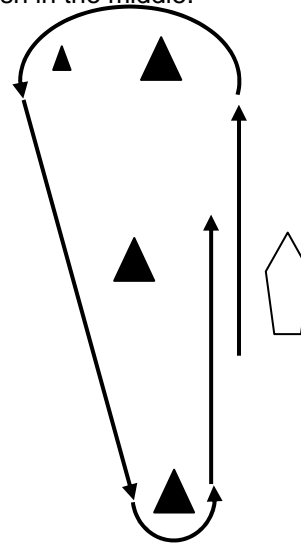
AO - Start, Windward, Offset, Leeward, Windward, Offset, Leeward, Finish



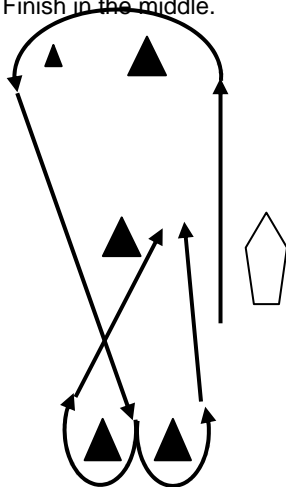
AOG - Start, Windward, Offset, Leeward, Gate, Windward, Offset, Leeward, Finish



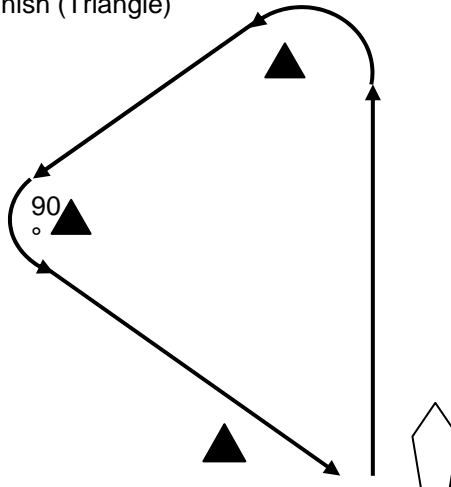
DO - Start, Windward, Offset, Leeward, Windward, Finish - Start and Finish in the middle.



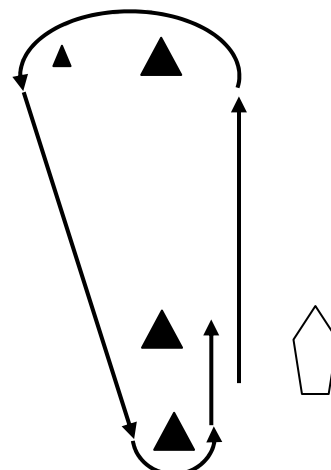
DOG - Start, Windward, Offset, Leeward, Gate, Windward, Finish - Start and Finish in the middle.



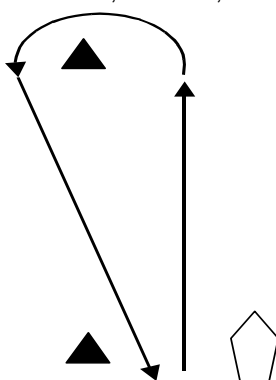
T - Start, Windward, Reach, Reach, Finish (Triangle)



SO - Start, Windward, Offset, Leeward, Short Windward, Finish



W - Start, Windward, Leeward, Finish.



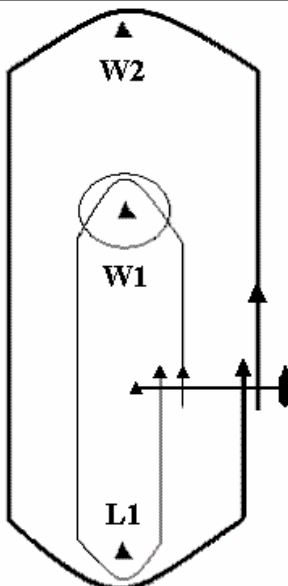
Before the Warning signal the Race Committee may signal - 2W or 3W

- 5 2W = Start-W-L-W-Finish
- 3W = Start-W-L-W-L-W-Finish

DOS -

Division 1&2 - Start, W2, L1, Finish

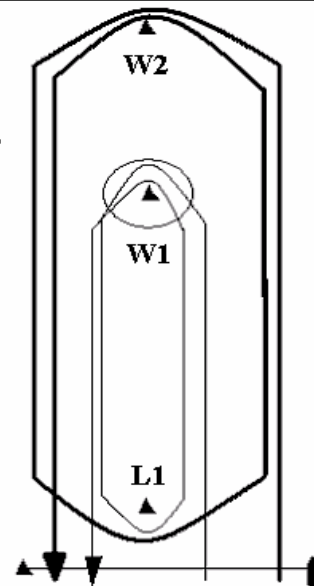
All Other Divisions - Start, W1, L1, Finish



SWT -

Div. 1&2 - Start - W2, L1, W2, Finish

All Other Divisions - Start, W1, L1, W1, Finish



Attachment 3

Time, Order of Starts, Time Limits and nominal intervals for Wednesday Night Races*(See #11)

- There will be 2 separate race areas and separate race committees, Offshore (area A) and J22/J24/Sonar (area B).
- Offshore will be announced on channel 9, One Design Committee will use channel 72

Wednesday J24, J22 and Sonar Classes Area B

Class	Flag	Warning*	Preparatory	One minute	Start
		(hr/flag)	(hr/flag)	(hr/flag)	(hr/flag)
J 24	7/CF	1820/7	1821/'P'&7	1824/7	1825/8
J22	8/CF	1825/8	1826/'P'&8	1829/8	1830/10
Sonar	10/CF	1830/10	1831/'P'&10	1834/10	1835

1. A race shall be abandoned should the first boat of the fleet fail to round the first mark within one hour of the first start of the Area B race.
2. A race shall be abandoned if no boat finishes within 1 ½ hours from the last start of that race.
3. If any boat finishes within the time limit, then the boats not finishing within 30 minutes of the first boat to finish will be scored DNF. This changes RRS 35.
4. If the Race Committee does not plan to run another race, it will fly Code Flag "AP over A "at the finish.
5. If the race committee intends to start another race on the same day, it will display the Second Substitute (with no sound) while boats are finishing.
6. No races will start after 8PM.

Wednesday Offshore Divisions racing on Area A

Class	Flag	Warning *	Preparatory	One minute	Start
Division		(hr/flag)	(hr/flag)	(hr/flag)	(hr/flag)
Offshore 6	6	1820/6	1821/'P'&6	1824/6	1825/5
Offshore 5	5	1825/5	1826/'P'&5	1829/5	1830/4
Offshore 4	4	1830/4	1831/'P'&4	1834/4	1835/3
Offshore 3	3	1835/3	1836/'P'&3	1839/3	1840/2
Offshore 2	2	1840/2	1841/'P'&2	1844/2	1845/1
Offshore 1	1	1845/1	1846/'P'&1	1849/1	1850/none

1. A race will be abandoned should any boat of the fleet fail to round the first mark within 1 hour from the first start of the Area A race.
2. A race shall be abandoned if no boat finishes within 1 ½ hours from the last start of that race.
3. If any boat finishes within the time limit, then the boats not finishing within 2 hours of the first boat to finish will be scored DNF. This changes RRS 35.

Time, Order of Starts, Time Limits and nominal intervals for Friday Night Genoa Only Fleet on Area A*(See #11)

Class	Flag	Warning*	Preparatory	One minute	Start
Division		(hr/flag)	(hr/flag)	(hr/flag)	(hr/flag)
J22/J24/Sonar	4	1820/4	1821/'P'&4	1824/4	1825/3
Genoa 3	3	1825/3	1826/'P'&3	1829/3	1830/2
Genoa 2	2	1830/2	1831/'P'&2	1834/2	1835/1
Genoa 1	1	1835/1	1836/'P'&1	1839/1	1840/none

1. A race will be abandoned should any boat of the fleet fail to round the first mark within 1 hour from the first start of the race.
2. A race shall be abandoned if no boat finishes within 1 ½ hours from the last start of that race.
3. If any boat finishes within the time limit, then the boats not finishing within 30 minutes of the first boat to finish will be scored DNF. This changes RRS 35.

Time, Order of Starts and Time limits for Collegiate, River Courses and Ideal 18 starts (See #11)

1. Saturday Ideal 18 First Race Warning Signal shall be at 1027 hours.
2. Thursday night Ideal 18 races Warning Signal shall be at 1827 hours
3. Thursday night Women's Racing Association Warning signal shall be at 1800 hours.
4. The second and subsequent races will begin as soon as possible following the finish of the previous race.
5. A class's race will be abandoned should the first boat of that class fail to finish within 45 minutes from the start of the class.
6. Boats not finishing within 20 minutes of the first boat of that class will be scored DNF. This changes RRS35.
7. No race will be started after 1500 hours on Saturdays and Sundays.

Tentative Time, Order of start and Nominal Intervals for Kelpie Race

Official times, division splits and sequence will be distributed with Kelpie Race Sailing Instructions at Competitors meeting 0830 June 10, 2005 at RYC Clubhouse

Class	Flag	Warning*	Preparatory	One minute	Start
Division		(hr/flag)	(hr/flag)	(hr/flag)	(hr/flag)
Spin. Div	1	0955/1	0956/'P'&1	0959/1	1000/GO
GO Division	GO	1000/GO	1001/'P'&GO	1004/GO	1005/none

Time, Order of Starts, Time Limits and nominal intervals for Memorial Day Races on Area A*(See #11)

Class	Flag	Warning*	Preparatory	One minute	Start
Division		(hr/flag)	(hr/flag)	(hr/flag)	(hr/flag)
Offshore 5 & 6	5 & 6	1000/5&6	1001/'P'&5&6	1004/5&6	1005/3&4
Offshore 3&4	3&4	1005/3&4	1006/'P'&3&4	1009/3&4	1010/2
Offshore 2	2	1010/2	1011/'P'&2	1014/2	1015/1
Offshore 1	1	1015/1	1016/'P'&1	1019/1	1020/7
J24	7	1020/7	1021/'P'&7	1024/7	1025/8&10
J22 & Sonar	8&10	1025/8&10	1026/'P'&8&10	1029/8&10	1030/GO
Genoa Only	GO	1030/GO	1031/'P'&GO	1034/GO	1035/none

* Class flags may be substituted for J22, J24 and Sonar classes

1. Subsequent Races will begin as soon as possible following the finish of the previous race.
2. The starting order for subsequent race(s) will be signaled by hoisting the class/division flag with the warning signal, note the order of class/division starts may vary from the previous race.
3. If the race committee intends to start another race on the same day, it will display the Second Substitute (with no sound) while boats are finishing.

Time, Order of Starts, Time Limits and nominal intervals for RYC Spring and Fall Open Regattas on Area A*(See #11)

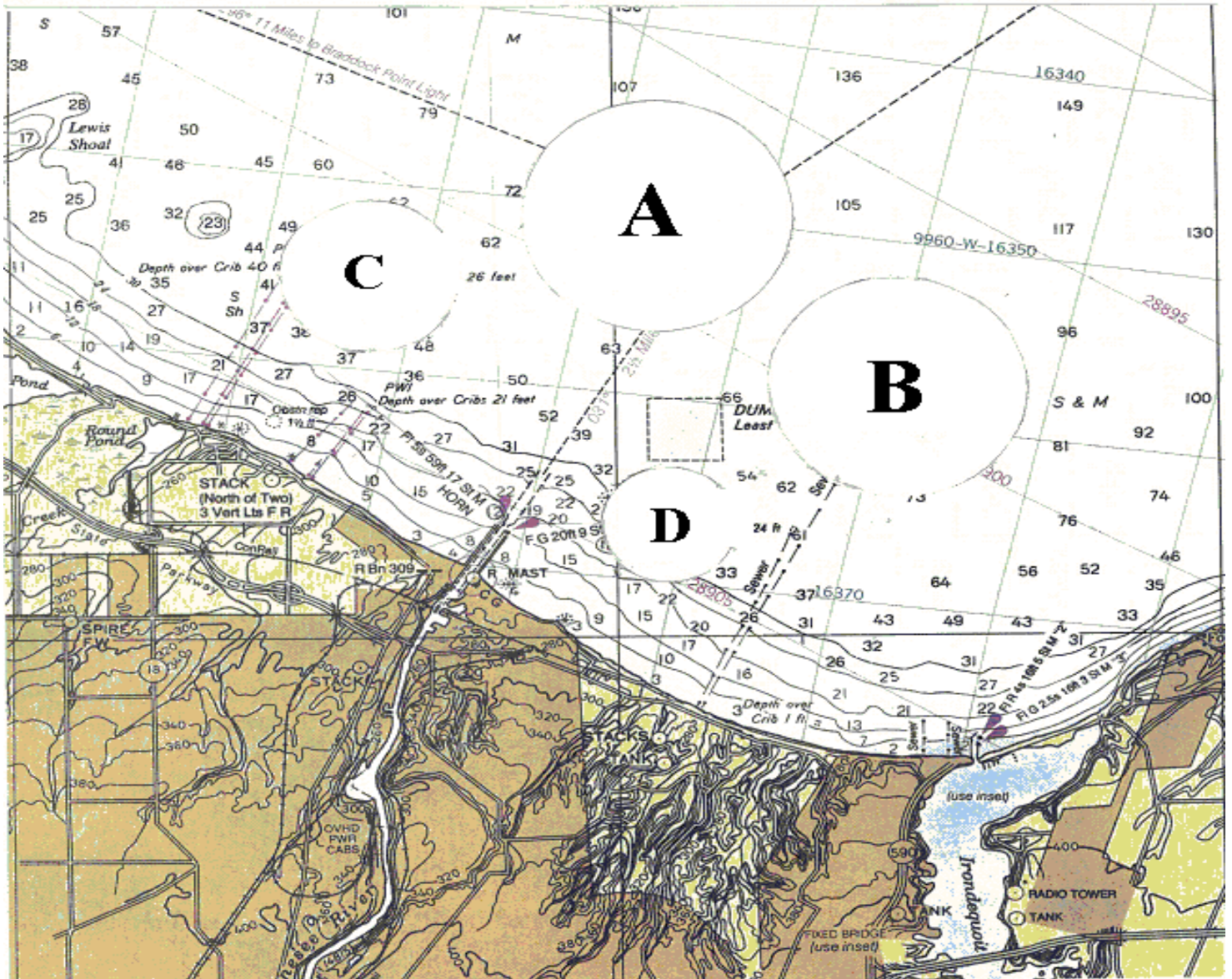
Class	Flag	Warning*	Preparatory	One minute	Start
Division		(hr/flag)	(hr/flag)	(hr/flag)	(hr/flag)
J24	7	1000/7	1001/'P'&7	1004/7	1005/8&10
J22 & Sonar	8&10	1005/8&10	1006/'P'&8&10	1009/8&10	1010/5&6
Offshore 5 & 6	5 & 6	1010/5&6	1011/'P'&4&6	1014/5&6	1015/3&4
Offshore 3&4	3&4	1015/3&4	1016/'P'&3&4	1019/3&4	1020/2
Offshore 2	2	1020/2	1021/'P'&2	1024/2	1025/1
Offshore 1	1	1025/1	1026/'P'&1	1029/1	1030/none

* Class flags may be substituted for J22, J24 and Sonar classes

1. Subsequent Races will begin as soon as possible following the finish of the previous race.
2. The starting order for subsequent race(s) will be signaled by hoisting the class/division flag with the warning signal, note the order of class/division starts may vary from the previous race.
3. If the race committee intends to start another race on the same day, it will display the Second Substitute (with no sound) while boats are finishing.
4. If the Race Committee does not plan to run another race, it will fly Code Flag "AP over A "at the finish.
5. No Race will start after 1600.

2005 RYC Sailing Instructions Attachment 4

Note. This chart is not to be used for navigation



Attachment #5
2005 Sailing Committee

FLEET CAPTAIN SAIL

Race Management
Assistant to Race Management
Principal Race Officers

Protest Committee Chairperson
Safety Committee Chairperson
CNYRA Delegate
LYRA Delegates

Ernie Ferullo
Hank Stuart
George Hock
Reid Stava, Rob Carlson, Steve Wilde, Greg McMahon, Bud Webb, Rob Rosati and Hank Stuart
Rick Sullivan
TBD
Robert Castle
Chris Dorsey, Tim Breen, Franz Schwenk

REGATTA CHAIRPERSON

RYC/GYC SSRC Spring & Fall Regattas
Area B Bemis & Smythe ¼ finals
Sabrefest 2005
Junior Olympic Regatta
Finn Clinic & Regatta
One Design Open Regatta
Jeff and Emily Hawley, Jay Tovey, Joe Case
Rochester Race
Optimist Dinghy NYSC Regatta

Steve Wilde
Hank Stuart
Jason Evans
Dick Neaubaur
Amy & Kevin Moran
Robert Mendenhall
Phil Wehrheim & Bob Bryant

Hank Stuart
Sandy Sertl

OFFSHORE FLEET

Captain
Scorer
PHRF Handicapper
PHRF L.O. Representative

Division Captains:

Division I - Beneteau 40.7
Division II
DIV III
Division IV
Division V
Division VI
Genoa Only

Paul Foti
Bill and Alicia Baum
Tim Breen and Jay Tovey
Tim Breen

Paul Foti
Dave Spang
Chris Dorsey
Tim Breen
Chad Henry
David Braitsch
David and Peggy Braitsch

ONE DESIGN FLEET

Captain
Class Captains:
Ideal 18
Laser
J/24
J/22
Optimist
Sonar
Women's' Racing Chairperson

Ernie Ferullo

Mark Lawless
Katie Evans
Lambert Lai
Jim Barnash
TBD
Rick Sullivan
Renee Spang